

360Jet Specifications

Horsepower Range:	150-400
Impeller Diameter:	15-18" (381-457 mm)
Speed Range:	0-15 kts.

DRIVE OPTIONS

- Diesel
- Hydraulic
- Electric

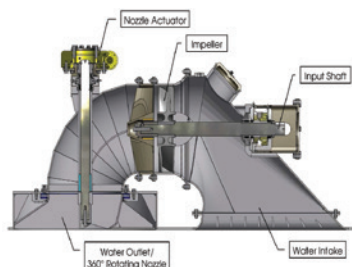
CONTROL OPTIONS

- Per Customer Specifications

IDEAL APPLICATIONS

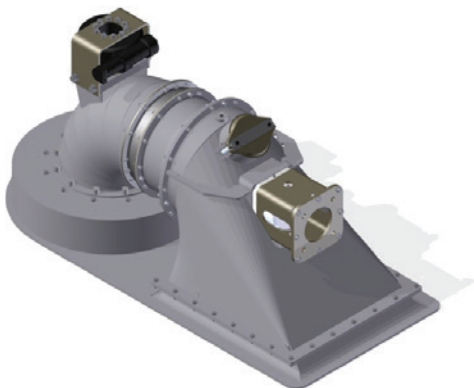
Any craft where superior maneuverability is demanded:

- Barges
- Ferries
- Military Vessels



Material Specifications

Intake, Hood, Steering:	Aluminum 5086 or Steel
Main Shaft & Coupler:	Stainless Steel
Impeller:	316 Stainless
Stator Bearing (Water Lubricated):	Thordon Composite
Hardware & Fasteners:	Stainless Steel
Wear Ring/Stator:	Aluminum 5086



THRUST

NAMJet's mass flow design pumps significantly more water at lower RPM than high-speed jets, providing exceptional thrust and fuel efficiency, and minimizing cavitation from 0-35 knots.

DURABILITY

NAMJet's have 2-3 times the impeller clearance of high-speed jets, allowing them to operate under the harshest conditions imaginable. The resulting decrease in system wear provides NAMJet Jet users a significantly lower lifetime cost of ownership.

SPEED

NAMJet's high-thrust, large-displacement systems, which are rated for speeds up to 35 knots dispels the common misconception that higher thrust can only be achieved by sacrificing speed.



36M X 11M CAR FERRY



AMPHIBIOUS EVACUATION CRAFT

THRUST. DURABILITY. SPEED